












## Arklow Bank Wind Park 2

### Suspended Sediment Concentrations within the Proposed Development and Wider Area (Cefas 2016)






#### Legend

-  Coastal Processes Study Area
-  ABWP2 Array Area
-  ABWP2 Cable Corridor and Working Area

#### Suspended Particulate Matter - Monthly Mean (1998-2015) (CEFAS)

-  0.085 - 0.97
-  0.97 - 2
-  2 - 4
-  4 - 6
-  6 - 8
-  8 - 10
-  10 - 12
-  12 - 14
-  14 - 16
-  >16

#### Seabed Frames (Fugro, 2021)

-  Frame A (D1-3)
-  Frame B (D2-3)
-  Frame C
-  Frame D
-  Frame E



#### Notes

Esri, CGIAR, USGS, Sources: Esri, TomTom, Garmin, FAO, NOAA, USGS, © OpenStreetMap contributors, and the GIS User Community, Esri, GEBCO, Garmin, NaturalVue. Contains Ordnance Survey data © Crown copyright and database rights (2022). OS OpenData.

Coordinate System:

ETRS 1989 UTM Zone 30N

0 10 20 km

0 5 10 nm

Scale Date

1:600,000 @ A3 02/02/2026

Drawn By Checked By Approved By

GB AK LK

Suites B2 & C2

Higher Mill

Higher Mill Lane

Buckfastleigh

Devon

TQ11 0EN

www.gobeconsultants.com

+44 (0)1626 323890

**GoBe**  
APEM Group

Figure Number 6.9

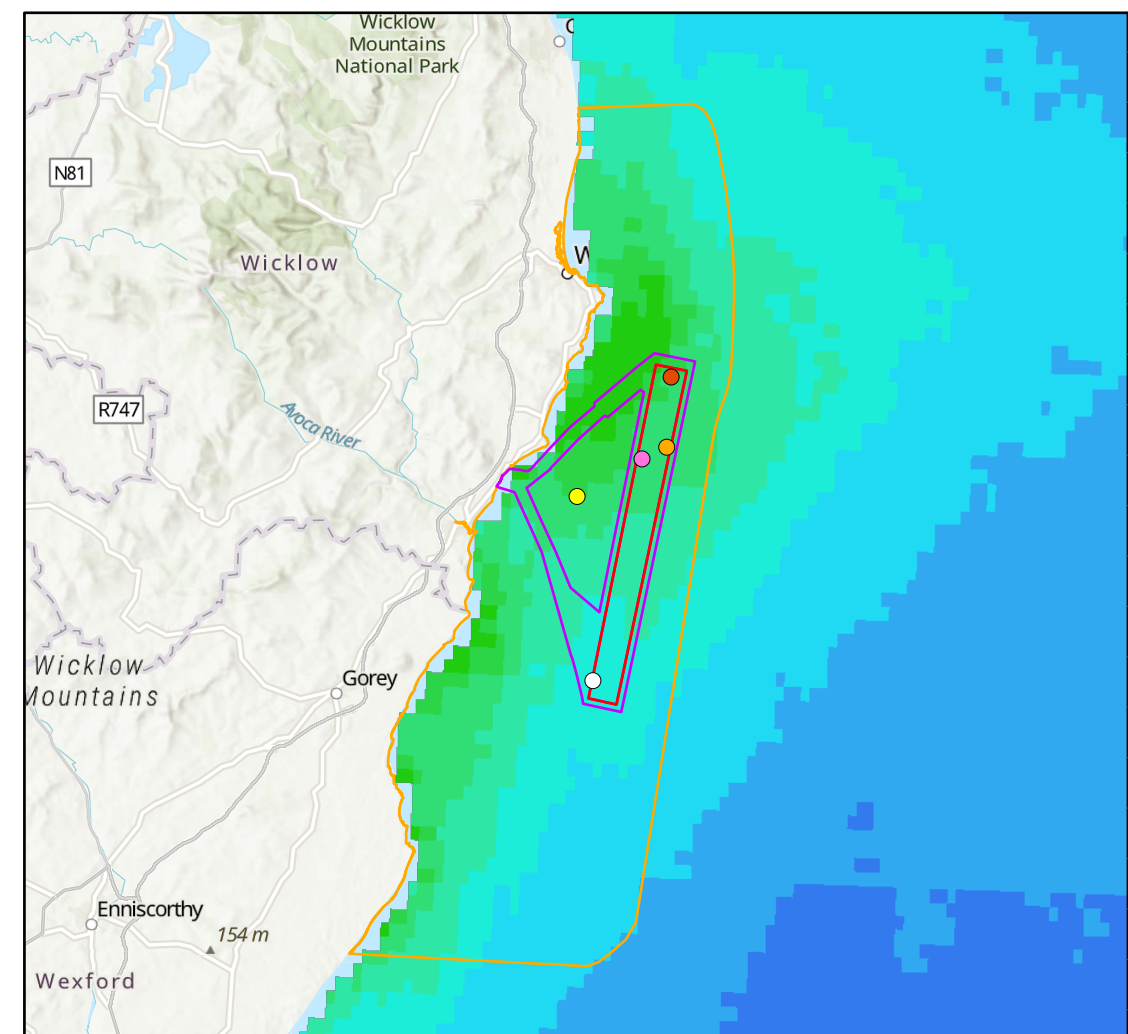
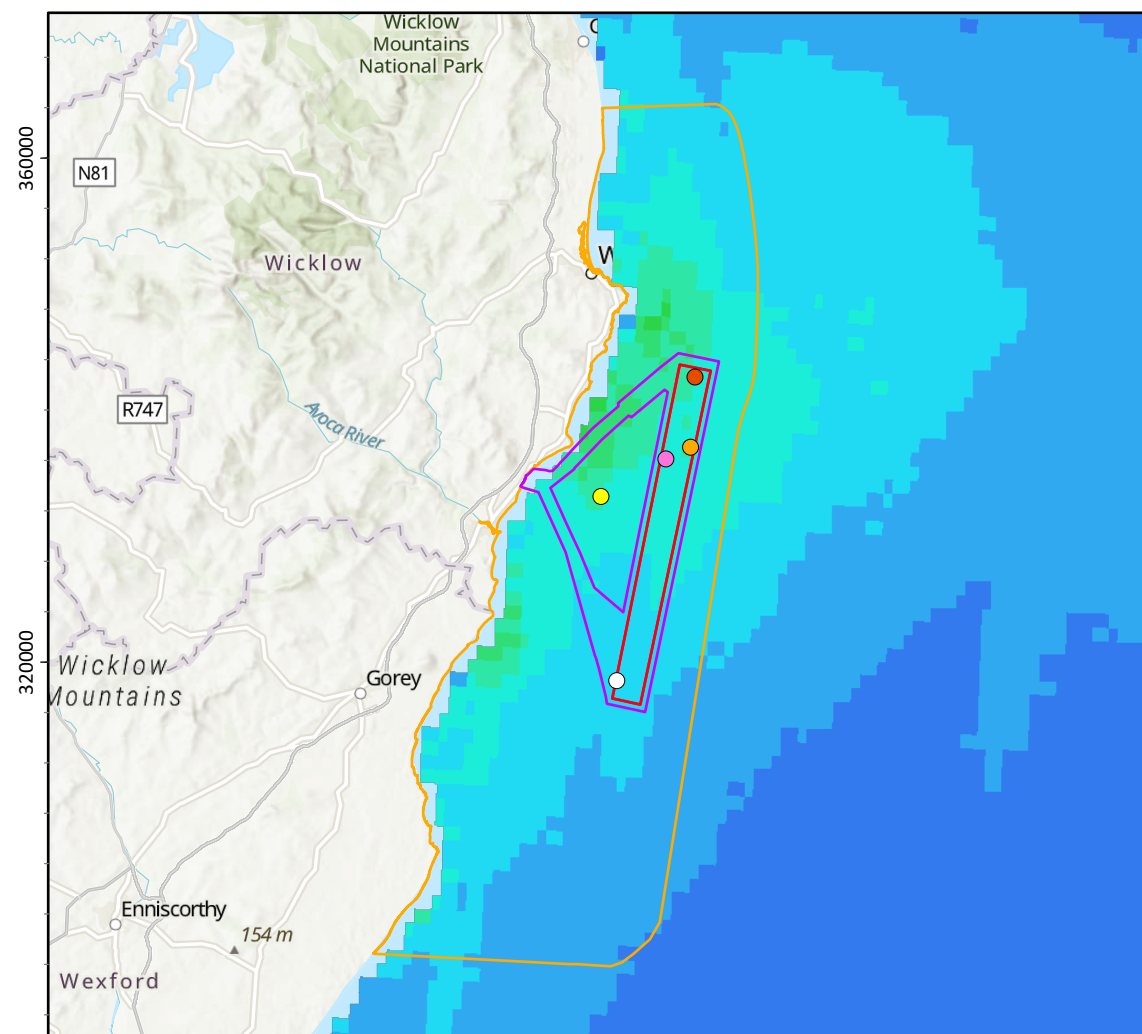
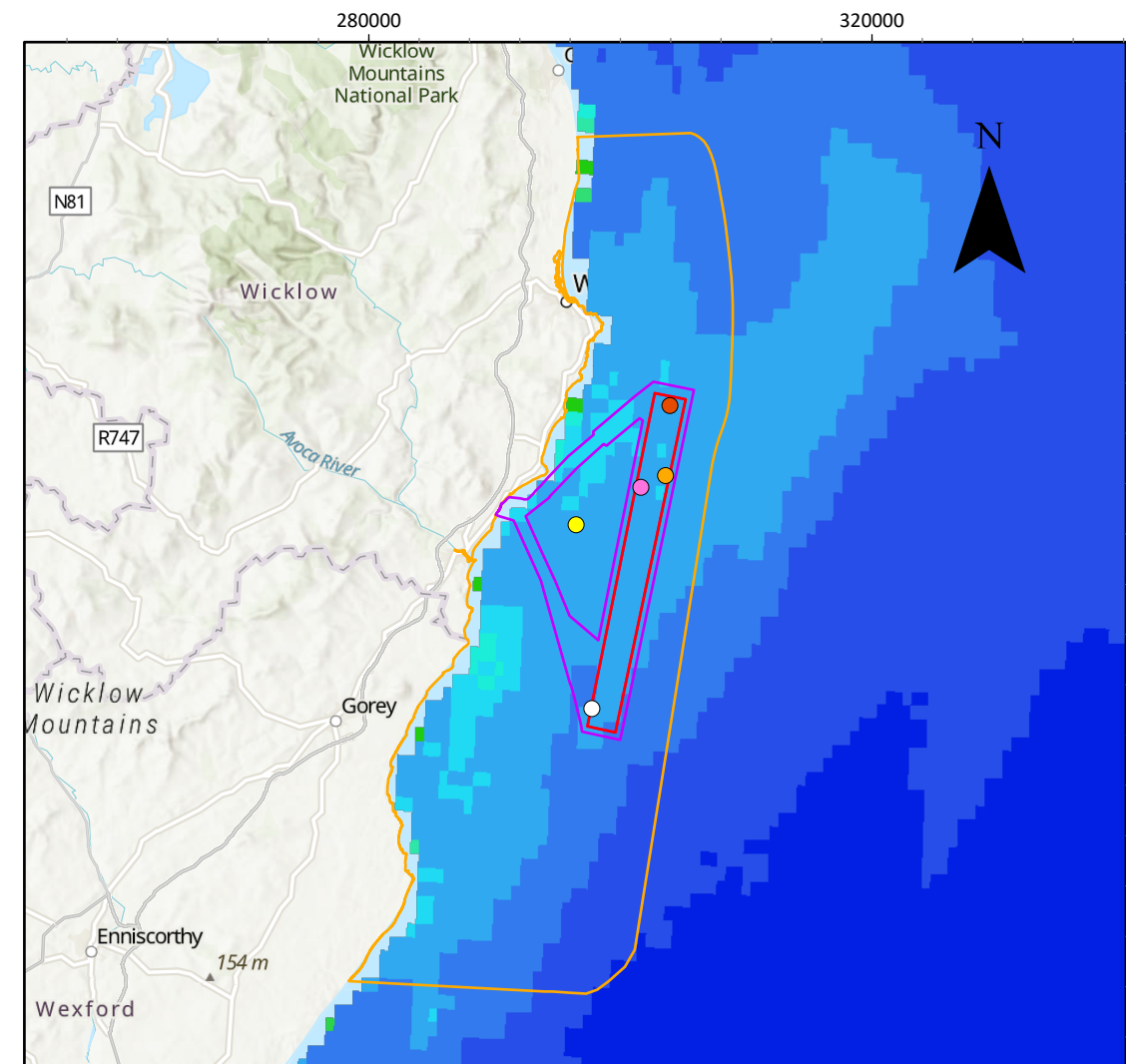
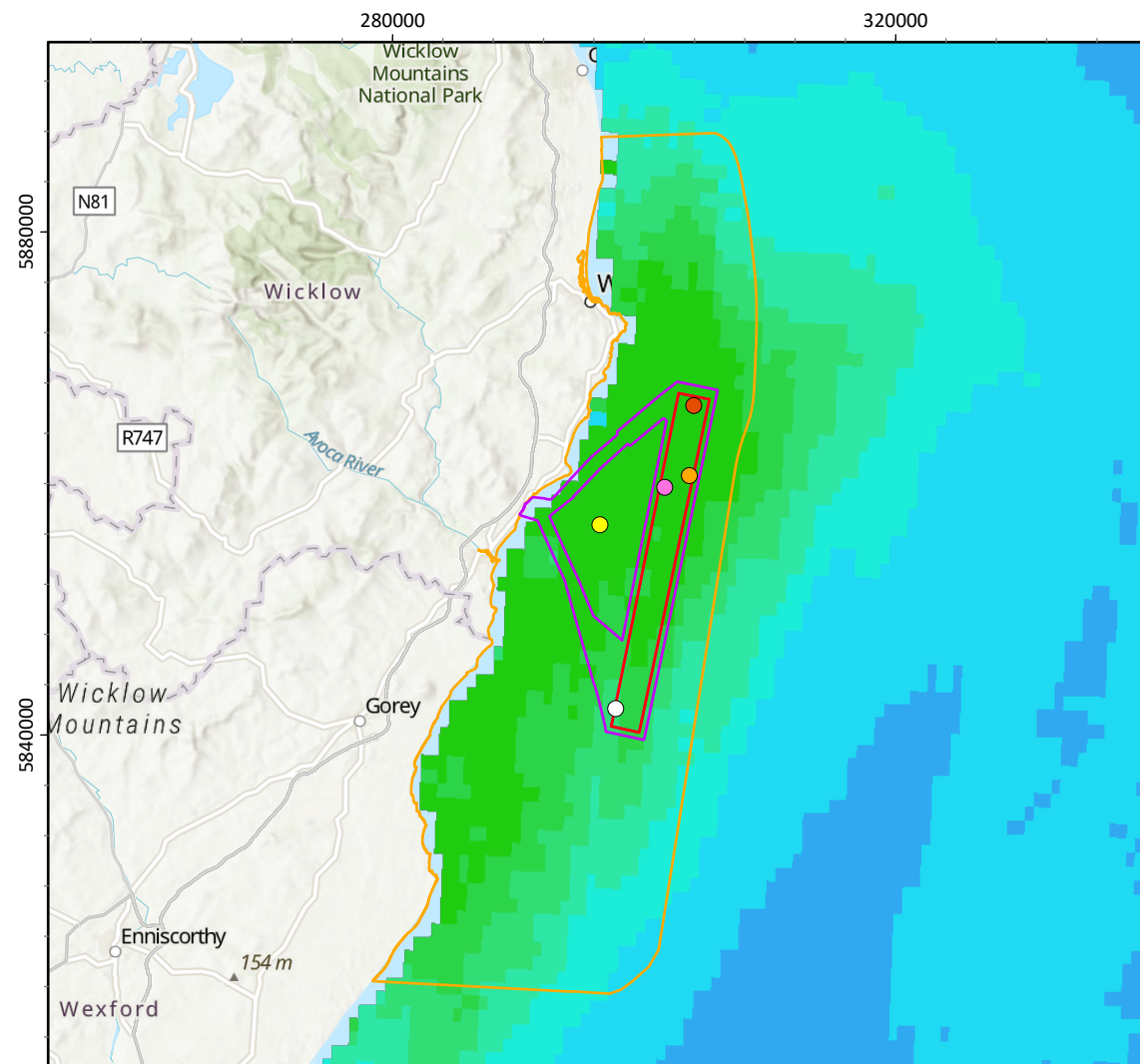


Figure Reference: Ark\_Fig6.9\_SuspendedSedimentConcentrations